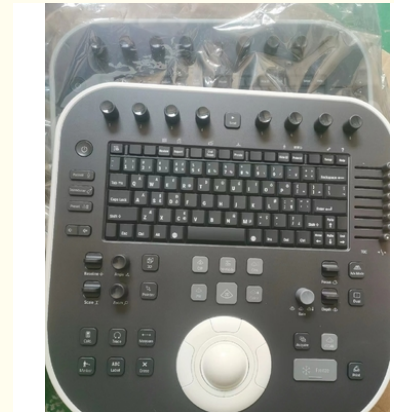


ATL Clearvue350 CV550 Original Ultrasound Machine Control Panel Replacement Parts

Our Product Introduction

Basic Information

- Place of Origin: Thailand
- Brand Name: ATL
- Model Number: /
- Minimum Order Quantity: 1pc
- Price: negotiable
- Packaging Details: carton
- Delivery Time: 3-5 days
- Payment Terms: T/T, Western Union
- Supply Ability: 10-30pcs/month



Product Specification

- Warranty: 60 Days
- Lead Time: 3-5 Days
- Service: Outright&exchange
- Shipping Method: Express,or As Clients Required
- Highlight: **atl clearvue350 ultrasound machine control panel**
, atl cv550 ultrasound replacement parts,
atl ultrasound parts control panel

for more products please visit us on 3dultrasoundprobe.com

Product Description

ATL Clearvue350 CV550 original ultrasound control panel

1. Part number: /
2. Type: Control panel
3. Trade term: Outright&exchange&repair service are provided
4. Warranty: 60 days



More details welcome to contact with us!

More parts we have in stock:

Brand	System	Description

ATL	HD15	ACB acquisition control board
ATL	HD15	AIM board 453561197306
ATL	Affiniti50/Affiniti70	ACQ acquisition control board 4535161610416/4535161610426
ATL	EPIQ 5/EPIQ 7	ACQ Acquisition Module board 453561734844
ATL	HD11	SP Board 453561210154
ATL	iU22/iE33	UMB module 453561254492
ATL	iU22/iE33	EMB module 453561419431/453561419431
ATL	CX50	mainboard 453561495832; 453561239048;453561622163
ATL	CX50	Power Supply board 453561384831;453561473243
ATL	CX50	CB board 453561473231
ATL	ClearVue350	AC/DC module
ATL	ClearVue350	Trackball

FOQ:

Q: What is the MOQ?

A: 1pc.

Q: How's the stock condition?

A: Wide variety of Ultrasound probe/board, new&used&compatible new for your choose.

Q: Is there any guarantee for the goods?

A: Fully-tested and safe packing before shipping, less than 3% warranty return claims of previous orders.

Q: Will you provide warranty?

A: Items are sold with NO WARRANTY, unless it is stated otherwise in the body of the proforma invoice/purchase order. Mostly 90 days for new original, 30/60 days for used.

Q: Do you test all your goods before delivery?

A: Yes, we have 100% tested our goods before delivery.

Q: Can I have the goods returned if it is not working good?

A: Yes, goods are permitted to be returned in same received condition within 7 days. Refund will be handled within 2-4 working days after final confirmation (Freight & bank fee excluded). Shipping fee for return should be borne by buyers

Q: If faults occurred after warranty date, can I contact you?

A: Sure, feel free to contact even years later. We'll look into the faults and try to find out some solutions/suggestions for you reference.

Q: How about the payment terms?

A: All orders are 100% prepaid before delivery. We accept wire transfer/ Western Union from bank, and cash. (US dollars, Euro, or CNY)

Q: How about delivery?

A: We ship worldwide. DHL/EMS/FedEx Express will be arranged within 1-5 working days after payment confirmed unless otherwise specified. We Seller are responsible for export Customs clearance in our end, and buyers for import Customs clearance in their end.



VOLKA MEDICAL TECH CO., LIMITED



+8619536805795



info@volka-medtech.com



3dultrasoundprobe.com

Office 5, 8/F, Mega Cube, 8 Wang Kwong Road, Kowloon Bay, KowLoon, Hong Kong