

## Original ATL HD11 HD11XE Ultrasound Control Panel 453563495544 Repair Parts

Our Product Introduction

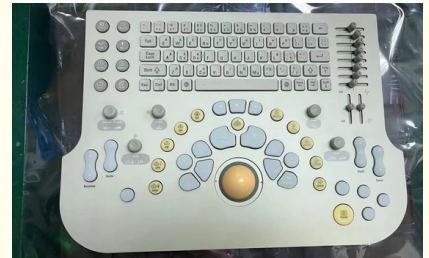
### Basic Information

- Place of Origin: Singapore
- Brand Name: ATL
- Model Number: 453563495544
- Minimum Order Quantity: 1pc
- Price: negotiable
- Packaging Details: carton
- Delivery Time: 3-5 working days
- Payment Terms: T/T, Western Union
- Supply Ability: 10-30pcs/month



### Product Specification

- Warranty: 60 Days After Fixed
- Service Time: 3-5 Working Days(normal Fault)
- Service: Repair
- Shipping Method: Express,or As Clients Required
- Highlight: **ATL HD11 Ultrasound Control Panel,  
453563495544 Repair Parts,  
ATL HD11XE Ultrasound Control Panel**



for more products please visit us on [3dultrasoundprobe.com](http://3dultrasoundprobe.com)

## Product Description

### Repair ATL HD11 HD11XE original ultrasound control panel 453563495544

1. Part number: 453563495544
2. Type: control panel
3. Trade term: repair service is provided.
4. Warranty: 60 days after fixed.



More details welcome to contact with us!

More parts we have in stock:

Brand	System	Description
ATL	HD15	ACB acquisition control board
ATL	HD15	AIM board 453561197306
ATL	Affiniti50/Affiniti70	ACQ acquisition control board 4535161610416/4535161610426

ATL	EPIQ 5/EPIQ 7	ACQ Acquisition Module board 453561734844
ATL	HD11	SP Board 453561210154
ATL	iU22/iE33	UMB module 453561254492
ATL	iU22/iE33	EMB module 453561419431/453561419431
ATL	CX50	mainboard 453561495832; 453561239048;453561622163
ATL	CX50	Power Supply board 453561384831;453561473243
ATL	CX50	CB board 453561473231
ATL	ClearVue350	AC/DC module
ATL	ClearVue350	Trackball

**FOQ:**

Q: What is the MOQ?

A: 1pc.

Q: How's the stock condition?

A: Wide variety of Ultrasound probe/board, new&used&compatible new for your choose.

Q: Is there any guarantee for the goods?

A: Fully-tested and safe packing before shipping, less than 3% warranty return claims of previous orders.

Q: Will you provide warranty?

A: Items are sold with NO WARRANTY, unless it is stated otherwise in the body of the proforma invoice/purchase order. Mostly 90 days for new original, 30/60 days for used.

Q: Do you test all your goods before delivery?

A: Yes, we have 100% tested our goods before delivery.

Q: Can I have the goods returned if it is not working good?

A: Yes, goods are permitted to be returned in same received condition within 7 days. Refund will be handled within 2-4 working days after final confirmation (Freight & bank fee excluded). Shipping fee for return should be borne by buyers

Q: If faults occurred after warranty date, can I contact you?

A: Sure, feel free to contact even years later. We'll look into the faults and try to find out some solutions/suggestions for you reference.

Q: How about the payment terms?

A: All orders are 100% prepaid before delivery. We accept wire transfer/ Western Union from bank, and cash. (US dollars, Euro, or CNY)

Q: How about delivery?

A: We ship worldwide. DHL/EMS/FedEx Express will be arranged within 1-5 working days after payment confirmed unless otherwise specified. We Seller are responsible for export Customs clearance in our end, and buyers for import Customs clearance in their end.



**VOLKA MEDICAL TECH CO., LIMITED**



+8619536805795



info@volka-medtech.com



3dultrasoundprobe.com

Office 5, 8/F, Mega Cube, 8 Wang Kwong Road, Kowloon Bay, Kowloon, Hong Kong