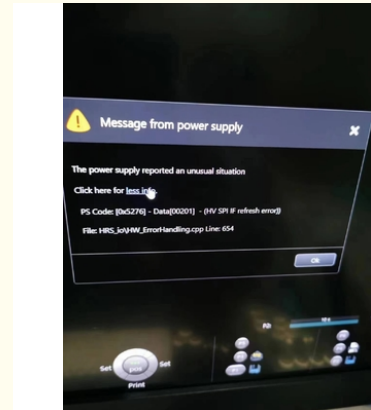


## Toshiba Aplio500 3D 4D Convex Array Ultrasound Transducer Repair PVT-675MV

Our Product Introduction

### Basic Information

- Place of Origin: Japan
- Brand Name: Canon Toshiba
- Model Number: PVT-675MV
- Minimum Order Quantity: 1pc
- Price: negotiable
- Packaging Details: carton
- Delivery Time: 3-5 working days
- Payment Terms: T/T, Western Union
- Supply Ability: 30-50pcs/month



### Product Specification

- Warranty: 60 Days After Fixed
- Delivery Method: Express Or As Clients Required
- Before Shipping: Test Images&videos Shared
- Service: Repair
- Highlight: **Convex Array Ultrasound Transducer Repair , Toshiba Aplio500 Convex Array Ultrasound Transducer , Ultrasound Transducer PVT-675MV**



for more products please visit us on 3dultrasoundprobe.com

## Product Description

### Repair Toshiba Aplio500 3D/4D convex array ultrasound probe PVT-675MV

1. Model: PVT-675MV
2. Type: 3D/4D convex array
3. Description: High Frequency 3D/4D
4. Compatible system: Aplio MX SSA-780A, Aplio 300, Aplio 400, Aplio 500
5. Repair including: Cables, covers, 3D/4D error, Oil leakage, dome, cables, connector
6. With 60 days warranty after fixed and 3-5 working days to repair.



### Warnings and cautions of ultrasonic probe

★The ultrasonic probe is a valuable device. It must be careful in the process of use. Avoid dropping, impact, or abrasion to transducers.

- ★When installing or removing the probe, first switch off the power and then operate it carefully.
- ★Avoid rapid and extreme temperature changes, as well as lengthy exposure to direct sunlight or a strong ultraviolet light source.
- ★Do not use sharp objects to penetrate the acoustic lens. Once the acoustic lens is damaged, the coupling gel is easy to enter the interior of the probe and damage the piezoelectric element.
- ★Do not soak transducer in any liquid above the recommended level as stated in the user manual for your system, please operate according to the manufacturer's instructions, otherwise it will lead to circuit failure or even burn out.
- ★Do not disinfect at high temperature, because the probe is equipped with piezoelectric ceramics, high temperature will weaken the effect.
- ★Before use, carefully check whether the housing and cable are damaged, so as to prevent the probe from high voltage injury.
- ★After the probe is used, the residual coupling gel on the probe must be wiped clean to prevent rats or other animals from gnawing the lens.



**VOLKA MEDICAL TECH CO., LIMITED**



+8619536805795



info@volka-medtech.com



3dultrasoundprobe.com

Office 5, 8/F, Mega Cube, 8 Wang Kwong Road, Kowloon Bay, Kowloon, Hong Kong