

ATL Cardiovascular Portable Original Ultrasound Machine CX50

Our Product Introduction

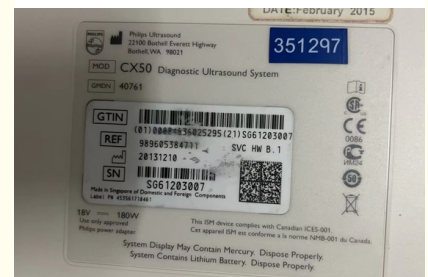
Basic Information

- Place of Origin: Switherland
- Brand Name: ATL
- Model Number: CX50
- Minimum Order Quantity: 1pc
- Price: negotiable
- Packaging Details: carton
- Delivery Time: 5-7 days
- Payment Terms: T/T, Western Union
- Supply Ability: 5-10pcs/month



Product Specification

- Warranty: 30 Days
- Lead Time: 5-7 Days
- Service: Outright
- Shipping Method: Express, or As Clients Required
- Highlight: **Original Ultrasound Machine, Portable Ultrasound Machine**



for more products please visit us on 3dultrasoundprobe.com

Product Description

ATL cardiovascular portable original machine CX50



ATL CX50 Ultrasound Machine Features

The CX50 launched in 2009 as the first ATL portable ultrasound and the most advanced portable ultrasound machine in the world. It continues to this day as the only truly premium portable ultrasound with support for both PureWave single crystal and xMatrix transducers, something no other portable ultrasound machine has as of 2016.

The CX50 is a shared service ultrasound machine equally capable in radiology and OB/GYN as cardiovascular applications. The only thing it will not do is 4D for OB/GYN applications. The ATL CX50 can offer 4D for Cardiac applications via the X7-2t xMatrix probe. Other applications that this system is capable of includes OB-GYN, intraoperative and musculoskeletal, small parts, stress echo and transcranial. This versatility is an integral aspect of the machine, and one that makes it extremely popular amongst all diagnosticians.

The compact size of the CX50 means it fits well in surgical, emergency and point of care situations where room is tight and mobility important. All versions of the CX50 except the initial A.0 revision are very stable and reliable. The CX50 is not limited to application in emergency or portable settings exclusively though. Compatible with an ultrasound cart / stand, the compact

unit can be turned into a stationary and stable ultrasound unit, utilized in hospitals, private offices and practices, and other stationary settings.

The most advanced features of the ATL CX50 are focused mainly on cardiac imaging. These technologies include **options for** cutting edge technology such as:

- Strain Quantification
- MicroVascular Imaging
- 3D quantification
- Cardiac motion quantification with speckle tracking technology
- Smart Exam automated protocols
- Live3D (4D) TEE
- Mitral Valve Quantification
- ICE Intracardiac Echo

ATL CX50 Ultrasound Features and Specifications

- 15" LCD monitor
- Pulse Inversion processing
- HPRF
- iScan
- SonoCT
- Advanced XRES
- Expanded field of view
- Active native data
- Live compare
- Smart exam
- Stress Echo
- QLAB

Compatible Probes / Transducers

- C6-2 Convex Array Probe
- C9-4V Endocavitary Probe
- L12-3 Linear Array Probe
- L12-5 Linear Array Probe
- L15-7lo Hockey Stick Probe
- S4-2 Sector Array Probe
- X7-2t TEE Probe



VOLKA MEDICAL TECH CO., LIMITED



+8619536805795



info@volka-medtech.com



3dultrasoundprobe.com

Office 5, 8/F, Mega Cube, 8 Wang Kwong Road, Kowloon Bay, Kowloon, Hong Kong