

Hitachi Aloka Phased Array Ultrasound Probe S22 For Arietta70

Our Product Introduction

for more products please visit us on 3dultrasoundprobe.com

Basic Information

- Place of Origin: Japan
- Brand Name: Hitachi Aloka
- Model Number: S22
- Minimum Order Quantity: 1pc
- Price: negotiable
- Packaging Details: carton
- Delivery Time: 3-5 days
- Payment Terms: T/T, Western Union
- Supply Ability: 10-30pcs/month



Product Specification

- Warranty: 60 Days
- Lead Time: 3-5 Days
- Service: Outright
- Shipping Method: Express, or As Clients Required
- Highlight: Arietta70 phased array ultrasound probe, Hitachi Aloka phased array ultrasound probe, S22 phased array ultrasound probe



Product Description

Hitachi Aloka Phased Array Ultrasound Probe S22 For Arietta70

Product Specifications

Attribute	Value
Warranty	60 days
Lead time	3-5 days
Service	Outright
Shipping method	Express, or as clients required

Key Features

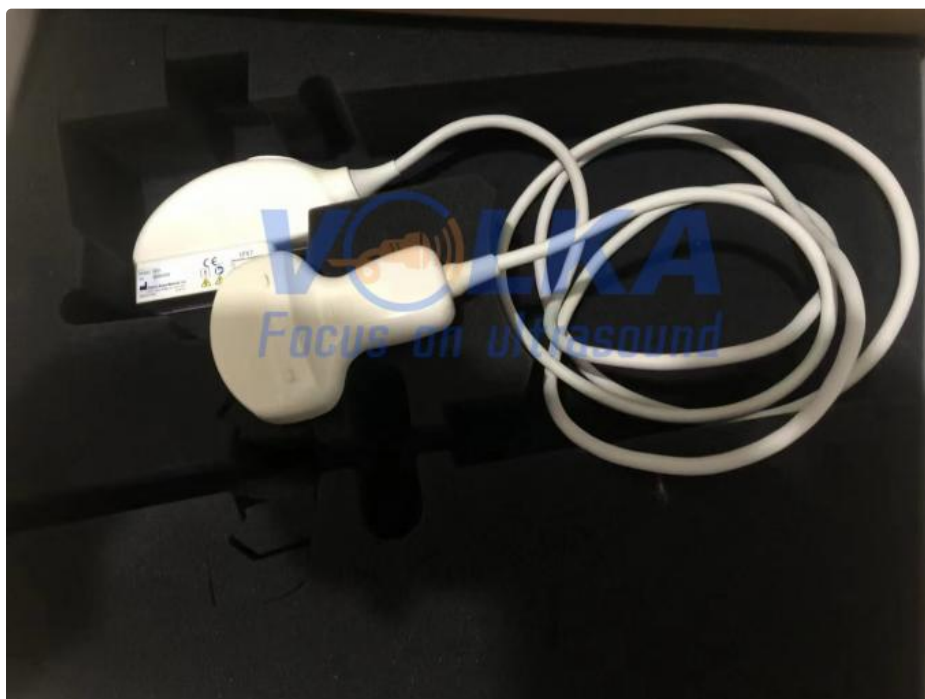
Model: S22

Application: Cardiology

Type: Phased array

Frequency: 1.0-5.0 MHz

Compatible system: Hitachi Aloka Arietta 70



Technical Details

Product Name	Ultrasound Probe/Ultrasound Transducer
Probe Model	Hitachi Aloka S22
Probe Type	Phased array
Central Frequency	1.0-5.0MHz

Compatible system	Arietta70
Delivery date	Within 1 week after getting payment
MOQ	1 Unit
Condition	Original
Material	Metal and Plastic
Application	Cardiology
Service	Used/new original sell

Revolutionizing Ultrasound: Hitachi Aloka ARIETTA 70

The Hitachi Aloka ARIETTA 70 ultrasound system elevates clinical performance through advanced technologies that produce the highest standard of ultrasound diagnostics. Key innovations include:

Crystal Multi-layered Technology: Enhances transmission and reception of ultrasound pulses for improved sensitivity and image clarity

Front-end Technology: Improves signal-to-noise ratio by suppressing unwanted noise

Compound Pulse Wave Generator (CPWG+): Delivers exceptional sensitivity and resolution

Pixel Focus: Provides pixel-level focusing for improved precision

UltraBackend Plus: Enables powerful image processing for extraordinary clarity

IPS-Pro Panel Technology: Offers high contrast and wide viewing angle for optimal visualization

Ergonomic Design Features

45% weight reduction compared to previous models for enhanced mobility

Two-way multi rotary encoders reduce hand and arm movements

Large palm rest for optimal wrist support

Adjustable panel height (down to 70 cm) for comfortable operation

Advanced Imaging Technologies

Symphonic Technologies: Reduced noise and superior penetration

HdTHI: Enhanced spatial resolution and deep area penetration

HI REZ: Reduces speckle noise while maintaining high frame rate

eFLOW: High spatial resolution for vascular imaging

Real-time Tissue Elastography (RTE): Assesses tissue stiffness in real-time

More details welcome to contact with us!



VOLKA MEDICAL TECH CO., LIMITED



+852 9070 6664



info@volka-medtech.com



3dultrasoundprobe.com

Office 5, 8/F, Mega Cube, 8 Wang Kwong Road, Kowloon Bay, Kowloon, Hong Kong