

GE Logiq E9 L8-18i-D Intraoperative Ultrasound Probe Broad-spectrum Linear Transducer 5499594

Our Product Introduction

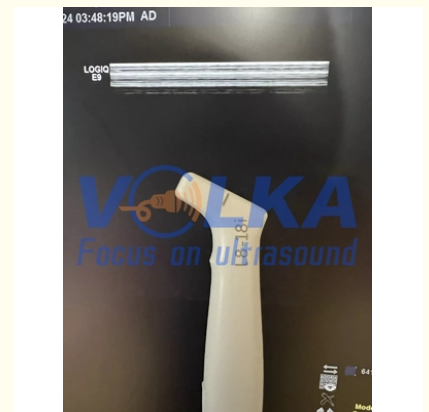
Basic Information

- Place of Origin: USA
- Brand Name: GE
- Model Number: 5335525 , 5336965 , 5410798 , H40452LL
- Minimum Order Quantity: 1pc
- Price: negotiable
- Packaging Details: carton
- Delivery Time: 3-5 days
- Payment Terms: T/T, Western Union
- Supply Ability: 10-30pcs/month



Product Specification

- Warranty: 90 Days
- Lead Time: 3-5 Days
- Service: Outright
- Shipping Method: Express, or As Clients Required
- Highlight: **Broad spectrum linear transducer, Intraoperative Ultrasound Probe**



Product Description

GE Logiq E9 L8-18i-D Intraoperative Ultrasound Probe Broad-spectrum linear transducer 5499594

The GE L8-18i-D Linear Array transducer has a frequency range of 5.0 MHz. - 15.0 MHz. and supports the following applications: Peripheral Vascular, Small Parts, Musculoskeletal, Intraoperative. The GE L8-18i-D transducer is compatible with: GE Vivid E95; GE Logiq E9; GE Logiq S7; GE Logiq S8 ultrasound systems.

Form Factor: Linear Array

Applications: Peripheral Vascular, Small Parts, Musculoskeletal, Intraoperative

Frequency Range: 5.0 - 15.0 MHz.

Compatibility: GE Vivid E95; GE Logiq E9; GE Logiq S7; GE Logiq S8





More details welcome to contact with us!

FAQ:

Q: What is the MOQ?

A: 1pc.

Q: How's the stock condition?

A: Wide variety of Ultrasound probe/board, new&used&compatible new for your choose.

Q: Is there any guarantee for the goods?

A: Fully-tested and safe packing before shipping, less than 3% warranty return claims of previous orders.

Q: Will you provide warranty?

A: Items are sold with NO WARRANTY, unless it is stated otherwise in the body of the proforma invoice/purchase order. Mostly 90 days for new original, 30/60 days for used.

Q: Do you test all your goods before delivery?

A: Yes, we have 100% tested our goods before delivery.

Q: Can I have the goods returned if it is not working good?

A: Yes, goods are permitted to be returned in same received condition within 7 days. Refund will be handled within 2-4 working days after final confirmation (Freight & bank fee excluded). Shipping fee for return should be borne by buyers

Q: If faults occurred after warranty date, can I contact you?

A: Sure, feel free to contact even years later. We'll look into the faults and try to find out some solutions/suggestions for you

reference.

Q: How about the payment terms?

A: All orders are 100% prepaid before delivery. We accept wire transfer/ Western Union from bank, and cash. (US dollars, Euro, or CNY)

Q: How about delivery?

A: We ship worldwide. DHL/EMS/FedEx Express will be arranged within 1-5 working days after payment confirmed unless otherwise specified. We Seller are responsible for export Customs clearance in our end, and buyers for import Customs clearance in their end.



VOLKA MEDICAL TECH CO., LIMITED



+8619536805795



info@volka-medtech.com



3dultrasoundprobe.com

Office 5, 8/F, Mega Cube, 8 Wang Kwong Road, Kowloon Bay, Kowloon, Hong Kong