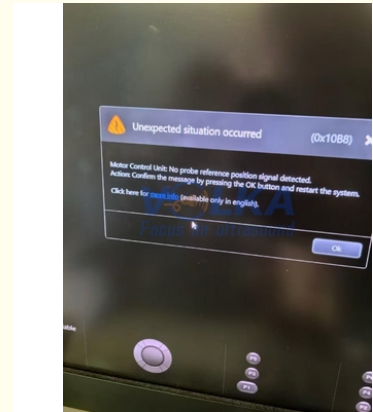


Repair GE Voluson E10 Convex 3D/4D OB/GYN Probe RM6C Motor Control Problem

Our Product Introduction

Basic Information

- Place of Origin: USA
- Brand Name: GE
- Model Number: RM6C
- Minimum Order Quantity: 1pc
- Price: negotiable
- Packaging Details: carton
- Delivery Time: 3-5 working days
- Payment Terms: T/T, Western Union
- Supply Ability: 30-50pcs/month

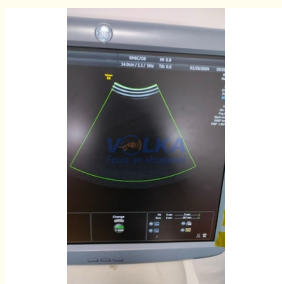


Product Specification

- Warranty: 60 Days After Fixed
- Delivery Method: Express Or As Clients Required
- Before Shipping: Test Images&videos Shared
- Service: Repair
- Highlight: **GE Voluson E10 Probe Repair, OB/GYN Probe Repair, Repair GE Voluson E10 Probe**



More Images

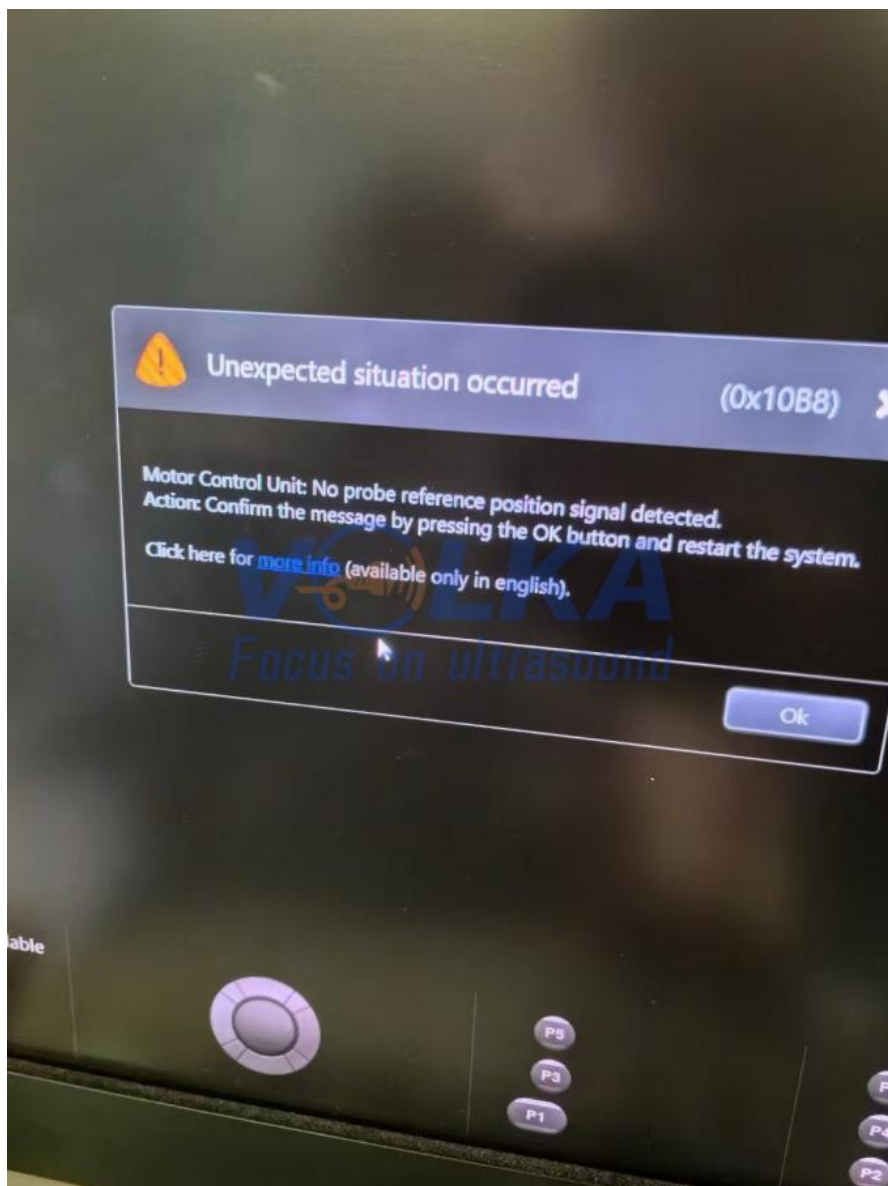


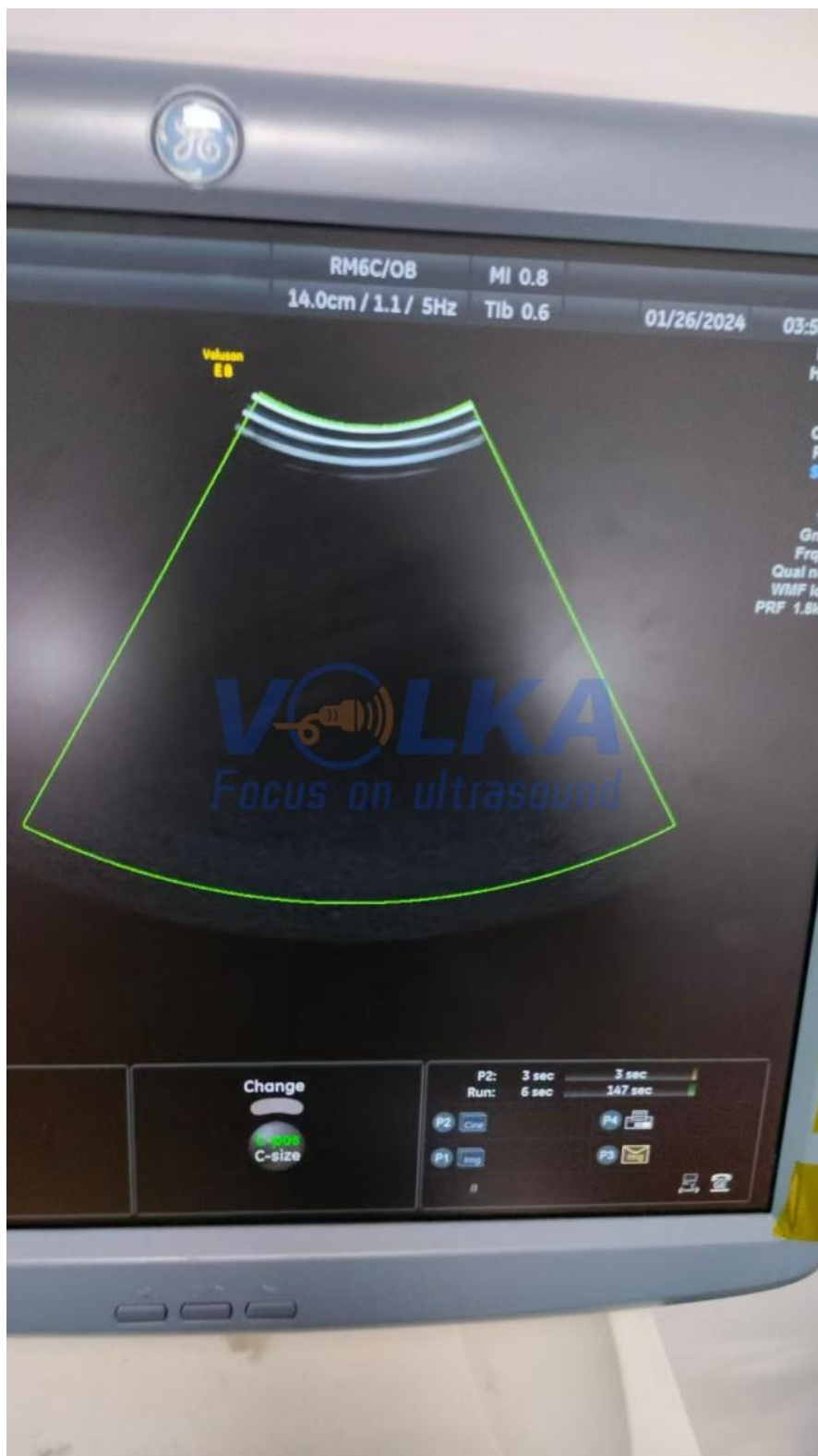
for more products please visit us on 3dultrasoundprobe.com

Product Description

Repair GE Voluson E10 convex 3D/4D OB/GYN Probe RM6C Motor control problem

1. Model: RM6C
2. Type: convex 3D/4D
3. Application: OB/GYN, Abdomen, Active Matrix Array
4. Compatible system: Voluson E10, Voluson E8
5. Repair including: replace crystal, repair motor control problem, replace dome and etc
6. With 60 days warranty after fixed and 3-5 working days to repair.





How to do complete clinical evaluation of your transducer?

1.Frequency conversion

Whether the frequency can be transformed, it's the important indicator.

2.Frequency range

The wider the range, the better.

3.Scanning angle

The bigger the angle, the better. Especially for the intracavitary probes.



VOLKA MEDICAL TECH CO., LIMITED



+8619536805795



info@volka-medtech.com



3dultrasoundprobe.com

Office 5, 8/F, Mega Cube, 8 Wang Kwong Road, Kowloon Bay, KowLoon, Hong Kong