

Samsung HS50 BE board Ultrasound Accessories Parts P/N MI9202728

Our Product Introduction

for more products please visit us on 3dultrasoundprobe.com

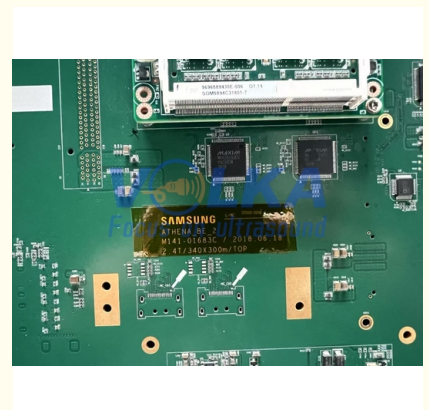
Basic Information

- Place of Origin: South Korea
- Brand Name: Samsung Medison
- Model Number: MI9202728
- Minimum Order Quantity: 1pc
- Price: negotiable
- Packaging Details: carton
- Delivery Time: 3-5 days
- Payment Terms: T/T, Western Union
- Supply Ability: 10-30pcs/month



Product Specification

- Warranty: 60 Days
- Lead Time: 3-5 Working Days
- Service: Outright/Exchange
- Shipping Method: Express, or As Clients Required
- Highlight: **Samsung HS50 BE board Ultrasound Accessories**
, P/N MI9202728 Ultrasound Spare Parts,
Samsung HS50 BE board



More Images



Product Description

Samsung HS50 BE board Ultrasound Accessories Parts P/N MI9202728

1. Part number: MI9202728
2. Type: BE assy
3. Trade term: outright&exchange service are provided.
4. Warranty: 60 days
5. Lead time: 3-5 days



More details welcome to contact with us!

Other GE System We Mainly Serve:

Brand	System	Description	Part number
GE	Logiq P5	APS power supply	5140505/5166108/5329667
GE	Logiq P5	CPU on SYSCONPM	5168431
GE	Logiq P5	SYSCONPM	5177848-3
GE	Logiq P6	APS II DC/PST power supply	5245004/5244555
GE	Logiq P6	SOM (CPU) on SYSCONML	5252251
GE	Logiq P6	SYSCONML with SOM	5252326-3/5252250-3
GE	Logiq S7/Logiq S8	CPS Power supply	6626600 R02/5413249-3

GE	Logiq S7	GBF128 transmitting board	5392446,5392446-3
GE	Logiq S7	mainboard GFS Assy	5371196
GE	Logiq S8	BF192	5357234/5357234-2
GE	Logiq S8	mainboard GFS Assy	5371196-2/5455247
GE	Vivid E80 E90 E95	CRX Receiver board	GC200002
GE	Logiq E9	MRX Board	5393908/5393912
GE	Logiq E9/vivid E9	GTX/GTX-TLP192	GA200726
GE	Logiq E9/vivid E9	GFI2	5161631
GE	Logiq E10 E11 E20	ETX128 channel PWA	5321216-4
GE	Voluson E6/Voluson E8	RSR	KTI301394-2/KTI196357
GE	Voluson E6/Voluson E8	RST	KTI301148
GE	Voluson E6/E8/E10	RSX	KTZ303054 /KTI303054
GE	Voluson E6/E8/E10	RFM201 FE mainboard	KTZ303916
GE	Voluson E6/E8/E10	RFM221 FE mainboard	KTZ303915
GE	Voluson E6/E8/E10	RFM423 FE-Mainboard	KTZ304142/KTZ304074/5729200
GE	Voluson E8/E10	RFM323 FE-Mainboard	5279044-4/5729044-7
GE	Voluson E6/Voluson E8	RFI20/ RFI21b Board	KTI300614/KTI302197_6
GE	Voluson S6/S8/S10/P6/P8	DBM64	5573639-2/ 5773603
GE	Voluson S6/S8/S10/P6/P8	DBM128/DBM128S	5573638-2/5573638
GE	Voluson S6/S8/P8	BF64	5396937-2
GE	Voluson S6/S8/P8	BF128	5338209-2/5728962
GE	Voluson S6/S8/P8	CPS Power supply	5393431/6002001
GE	Voluson S6/S8/P8	RFS board	5364098-2/5364098-3

Manufacture Description: Samsung H60

Performance at its best

INTRODUCING H60 ULTRASOUND

The H60 is a high-resolution system designed to perform 2D, 3D and 4D ultrasound. The slender design makes H60 the perfect fit for the office environment. The system incorporates advanced hybrid beamforming technology, as well as a selection of innovative image processing tools to meet your OB/GYN and Radiology needs.

Hybrid Beamforming Technology

Samsung's innovative hybrid beamformer technology is comprised of both advanced hardware and software, allowing for intricate digital programming, which better defines the shape of the ultrasound pulse. This provides more precise transmission and reception of the ultrasound signal, resulting in exceptional image clarity.

S-Vue™ Transducer

In addition to the advanced beamforming capabilities, the H60 incorporates the next-generation single-crystal probe technology called S-Vue™ transducers. Employing an innovative crystal design, S-Vue™ transducers provide more efficient piezoelectric properties, resulting in wider bandwidths for increased depth penetration and higher quality resolution on even the most challenging of patients.

The H60 features innovative image processing tools designed to meet your OB/GYN and Radiology needs.

ClearVision™

ClearVision™ is an advanced multi-filtering technology designed to decrease speckle, enhance border detection, and display exceptional contrast resolution. ClearVision™ significantly enhances image clarity, providing more confident assessment of fetal anatomy.

S-Flow™

S-Flow™ is a highly sensitive Doppler technology utilizing both phase (directional) and amplitude data to ensure confident vascular documentation on even the smallest peripheral vessels.

18.5-inch LED Monitor

The H60 features an 18.5" LED display, delivering excellent contrast resolution, image clarity and vibrant color in any lighting condition.

ElastoScan™

ElastoScan™ technology facilitates an effective method for assessment and documentation of tissue stiffness. ElastoScan™

may prove an effective adjunct to conventional grayscale imaging, often providing more defined visualization of tumor images.

Volume NT & IT™

Volume NT™ simplifies the nuchal translucency measurement process by locating the precise mid-sagittal plane in a single step. Semi-automatic measurements are then performed to improve NT™ accuracy and reduce examination time.

Beam Steering

Electronically steer ultrasound beam for more confident display of needle shaft and tip, providing precise needle guidance.

XI STIC

XI STIC displays the 3D fetal heart as a dynamic cardiac cycle.

3D XI™

Comprised of a suite of outstanding imaging applications, 3D XI™ (Multi-Slice View,™ Oblique View™) offers precise control over data manipulation for diagnostic accuracy.

INTUITIVE WORKFLOW SOLUTIONS

Designed for optimal workflow, the H60 features digital TGC, QuickScan™ and an intelligent control panel.

QuickScan™

Designed to maximize efficiency, QuickScan™ technology provides intuitive optimization of gray scale and Doppler parameters. One touch of the QuickScan™ button enhances workflow by adjusting functions including color gain and color box location.

Intelligent Control Panel

Implementing user-defined menus and console keys allows the user to customize the control panel to maximize workflow efficiency.

DESIGNED FOR YOUR CONVENIENCE

18.5-inch LED Monitor

The H60 features an 18.5" LED display, delivering excellent contrast resolution, image clarity and vibrant color in any lighting condition.

Gel Warmer

Two-level adjustable warmer maintains ultrasound gel at a comfortable temperature from 86°F to 102.2°F.

Mobility

The high-quality wheels provide easy movement when performing examinations.

Slim & Lightweight

The slim and compact design of the H60 facilitates the needs of the office and hospital environment.

Lift Control Panel

The height-adjustable control panel is designed to enhance user comfort and allow for optimal ergonomic positioning during the examination.

Accessory Drawer

Conveniently located on the front of the system, the accessory drawer is perfect for storing scanning gel and a variety of supplies.

COMPREHENSIVE COLLECTION OF TRANSDUCERS

Curved array transducers

CA1-7AD

- Application: abdomen, obstetrics, gynecology

CA2-8AD

- Application: abdomen, obstetrics, gynecology

CS1-4

- Application: abdomen, obstetrics, gynecology

CF4-9

- Application: pediatric, vascular

C2-8

- Application: abdomen, obstetrics, gynecology

Linear array transducers

LF5-13

- Application: small parts, vascular, musculoskeletal

LA3-14AD

- Application: sm parts, vascular, musculoskeletal

L5-13

- Application: small parts, vascular, musculoskeletal

Volume transducers

CV1-8AD

- Application: abdomen, obstetrics, gynecology

3D2-6

- Application: abdomen, obstetrics, gynecology

VE4-8

- Application: abdomen, obstetrics, gynecology

V5-9

- Application: obstetrics, gynecology, urology

3D4-9

- Application: obstetrics, gynecology, urology

Endo-Cavity transducer

VR5-9

- Application: obstetrics, gynecology, urology

EVN4-9

- Application: obstetrics, gynecology, urology

ER4-9

- Application: obstetrics, gynecology, urology

Phased array transducers

PE2-4

- Application: cardiac, abdomen, TCD

SP3-8

- Application: cardiac, abdomen, TCD

CW transducers

DP2B

- Application: cardiac

CW4.0

- Application: cardiac



VOLKA MEDICAL TECH CO., LIMITED



+8619536805795



info@volka-medtech.com



3dultrasoundprobe.com

Office 5, 8/F, Mega Cube, 8 Wang Kwong Road, Kowloon Bay, Kowloon, Hong Kong