

Samsung Medison HS40 Original Ultrasound Sensor LA3-16AD Linear Probe

Our Product Introduction

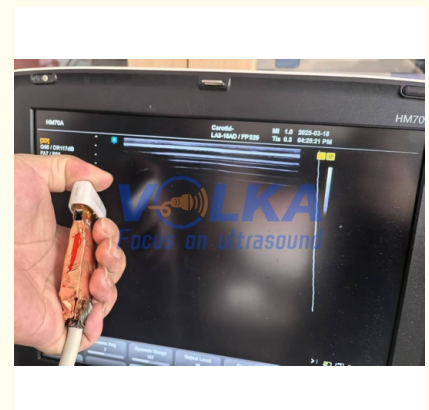
Basic Information

- Place of Origin: South Korea
- Brand Name: Samsung Medison
- Model Number: LA3-16AD
- Minimum Order Quantity: 1pc
- Price: negotiable
- Packaging Details: carton
- Delivery Time: 3-5 days
- Payment Terms: T/T, Western Union
- Supply Ability: 10-30pcs/month



Product Specification

- Warranty: 60 Days
- Lead Time: 3-5 Days
- Service: Outright
- Shipping Method: Express, or As Clients Required
- Highlight: LA3-16AD Linear Probe,
Original Ultrasound Sensor Linear Probe,
Samsung Medison HS40 Linear Probe

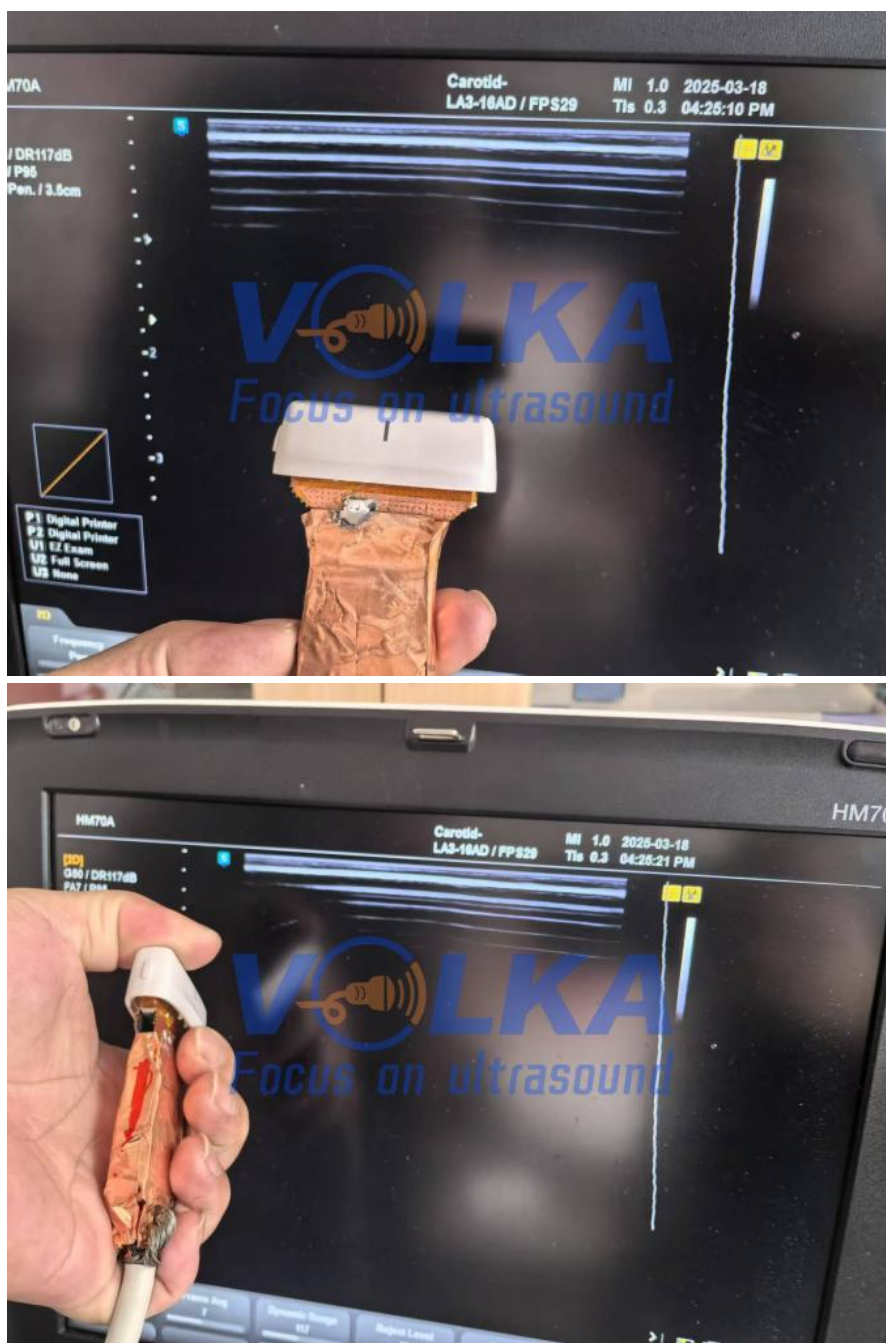


for more products please visit us on 3dultrasoundprobe.com

Product Description

Samsung Medison HS40 Original Ultrasound Sensor LA3-16AD Linear Probe

Form Factor: Linear Array
Applications: Vascular, Small Parts
Frequency Range: 3.0/16.0 Mhz
Compatibility: HS40



More details welcome to contact with us!

The Premium Dimension WS80A

The premium dimension in the ultrasound for women's health has opened up with UGEO WS80A, a groundbreaking ultrasound system that provides superior image performance for a variety of women's health exams. With stylish Samsung design and innovative features including the 5D technologies, MPI and ElastoScan™, UGEO WS80A redefines premium ultrasound for women's health.

Dimensions and weight

Height: 1,430 ~ 1,710 mm
Width: 557 mm
Depth: 791 ~ 860 mm
Weight with monitor: approx. 105.4 kg (232 lb.)

Power Supply

Voltage: 100- 240 V AC
Frequency: 50/60 Hz
Power Consumption
714.7 VA with Peripherals
564.7 VA without Peripherals
Nominal Current:
110V: 8.2A
220V: 4.1A
Heat Dissipation: 3207.8BTU/h
Safety Class
Ultrasound system: A
Transducer: Depend on transducer specification

Console Design

4 active Probe Ports
Height/Rotate adjustable control panel
Height/Tilt/Rotate adjustable monitor
On-board storage for peripherals
6 probe holders
4 Swivel/Lock wheels (wheel diameter: 125 mm)
Front and rear handles
Rear storage cover for peripheral connectors and cables
Integrated cable management
Integrated high-fidelity stereo speakers
Prevention of noise of the system
Easily removable air filter
Integrated SSD 512GB
Integrated DVD Multi Recordable Driver
EMC Class A
Gel Warmer
Endo-cavity Probe holder (Optional)
ECG (Optional)

Touch Screen

10.1" high resolution LED Monitor
Display Size: 1280 x 800
Capacitive touch type
Virtual Alpha KBD
Interactive dynamic soft key menu display
Quick Preset for Easy preset change

Monitor

23 inch LCD monitor (LED backlight unit)
Resolution: 1920 x 1080 x 24 bits
High-Resolution monitor Non Interlace Scan
Height: adjustable ~ 270 mm
Forth/Back: adjustable ~ 160 mm
Tilt: adjustable +20° / - 15° from center
Rotate: adjustable +/- 40° from center,
others +/- 50° from center High brightness & contrast
Digital brightness & contrast adjustment

Operating modes

2D-Mode
M-Mode
Color-M-Mode
Color Doppler Mode
Power Doppler Mode
S-Flow™ Mode
Directional Power Doppler Imaging (DPDI)
Pulsed Wave (PW) Spectral Doppler
Harmonic Imaging
Elastoscan Mode
TDI (Tissue Doppler Imaging) Mode
TDW (Tissue Doppler Wave) Mode
Anatomical M Mode(Arbitrary M mode)

Single/Dual/Quad mode
Volume-mode(3D/4D)
Vel+Variance Mode

System Standard Features

Full Spectrum Imaging (3 bands)
S-Harmonic Mode
Pulse Inversion Harmonic
Coded Harmonic Imaging
Trapezoidal Imaging
Quick Scan™ (Automatic Optimization)
ClearVision
MultiVision
AutoIMT+™
VOCAL™, XI VOCAL™
3D/4D
Volume Slice View™
Inversion 3D
Raw Data Analysis
Post-image optimization
Patient Information Database
Image Archive integrated on CD/DVD and HDD drive
Support for external USB 2.0 HDD drive
Cine for 12,700(Max Condition) frames and Loop
Review for 8,192 lines
Auto Calc (Real-Time Automatic Doppler Calculation)
Doppler Auto Trace
User Configurable Measurement Menu
Customizable Measurement Menu
Customizable Body Maker
Customizable User Keys
Post-Measurement
On-board electronic documentation
Fully Digital Real Time Recording
Screen Keyboard
5D Cine
Beam Steer
RMS

Optional Features

4D
3D XI™
3D MXI™
DICOM
DICOM Q/R
XI STIC
Auto IMT+™
Elastoscan
E-Thyroid
E-Breast
Panoramic Imaging
HDVI™
ADVR™ (Agile DVR)
Mobile Export
Realistic Vue
5D CNS
5D CNS+
5D Heart
5D Heart Color
5D Follicle
5D NT
5D LB
5D LimbVol.
2D NT
MPI
Smart 4D
S-Detect for Breast
S-Detect for Thyroid
CrystalVue
CrystalVue Flow
IOTA-ADNEX
Biometry Assist
E-Cervix
CEUS +

FOQ:

Q: What is the MOQ?

A: 1pc.

Q: How's the stock condition?

A: Wide variety of Ultrasound probe/board, new&used&compatible new for your choose.

Q: Is there any guarantee for the goods?

A: Fully-tested and safe packing before shipping, less than 3% warranty return claims of previous orders.

Q: Will you provide warranty?

A: Items are sold with NO WARRANTY, unless it is stated otherwise in the body of the proforma invoice/purchase order. Mostly 90 days for new original, 30/60 days for used.

Q: Do you test all your goods before delivery?

A: Yes, we have 100% tested our goods before delivery.

Q: Can I have the goods returned if it is not working good?

A: Yes, goods are permitted to be returned in same received condition within 7 days. Refund will be handled within 2-4 working days after final confirmation (Freight & bank fee excluded). Shipping fee for return should be borne by buyers

Q: If faults occurred after warranty date, can I contact you?

A: Sure, feel free to contact even years later. We'll look into the faults and try to find out some solutions/suggestions for you reference.

Q: How about the payment terms?

A: All orders are 100% prepaid before delivery. We accept wire transfer/ Western Union from bank, and cash. (US dollars, Euro, or CNY)

Q: How about delivery?

A: We ship worldwide. DHL/EMS/FedEx Express will be arranged within 1-5 working days after payment confirmed unless otherwise specified. We Seller are responsible for export Customs clearance in our end, and buyers for import Customs clearance in their end.



VOLKA MEDICAL TECH CO., LIMITED



+8619536805795



info@volka-medtech.com



3dultrasoundprobe.com

Office 5, 8/F, Mega Cube, 8 Wang Kwong Road, Kowloon Bay, Kowloon, Hong Kong