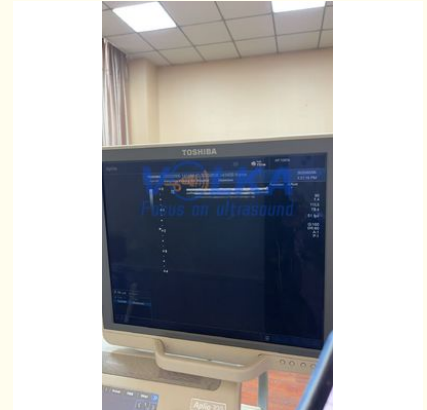


Canon Toshiba Aplio 50 SSA-700A Linear Vascular ultrasound probe PLT-704AT

Our Product Introduction

Basic Information

- Place of Origin: Japan
- Brand Name: Canon Toshiba
- Model Number: PLT-704AT
- Minimum Order Quantity: 1pc
- Price: negotiable
- Packaging Details: carton
- Delivery Time: 3-5 days
- Payment Terms: T/T, Western Union
- Supply Ability: 10-30pcs/month



Product Specification

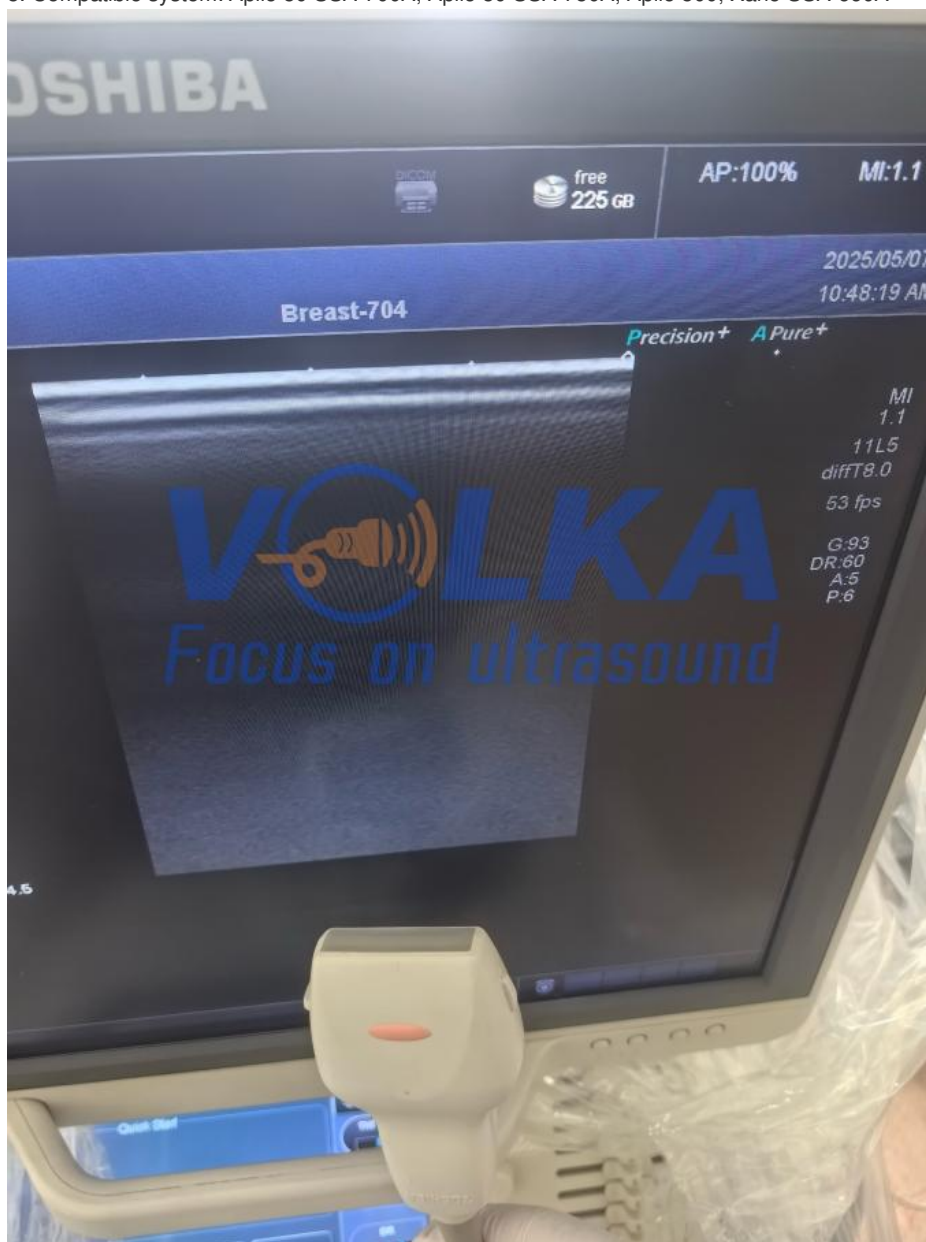
- Warranty: 60 Days
- Lead Time: 3-5 Days
- Service: Outright
- Shipping Method: Express, or As Clients Required



Product Description

Canon Toshiba Aplio 50 SSA-700A Linear Vascular ultrasound probe PLT-704AT

1. Model: PLT-704AT
2. Application: Vascular, Small Parts
3. Type: Linear
4. Frequency: 6.0/11.0 Mhz
5. Compatible system: Aplio 50 SSA-700A, Aplio 50 SSA-750A, Aplio 500, Xario SSA-660A



More details welcome to contact with us!

Product Name	Ultrasound Probe/Ultrasound Transducer
Probe Model	PLT-704AT
Probe Type	Linear
Central Frequency	6.0/11.0 Mhz
Compatible system	Aplio 50 SSA-700A, Aplio 50 SSA-750A, Aplio 500, Xario SSA-660A
Warranty	60 days
Delivery date	Within 1 week after getting payment

MOQ	1 Unit
Condition	original
Material	Metal and Plastic
Application	Vascular, Breast, Small Parts, Musculoskeletal
Service	Used/new original sell

Tips:

ATL HD 9 ultrasound system provides the outstanding image quality required in OB/GYN practices, as well as the versatility to meet the needs of all women's health applications.

Clinical performance supports a confident diagnosis

The 3D and 4D capabilities of the HD 9 are easy to learn, making it an ideal system for those just beginning 3D and 4D imaging, as well as those who appreciate this combination of simplicity and sophistication. The HD 9 also delivers tools that help you take advantage of the full value of volume data to guide patient care:

Live iSlice, which creates slices of a volume rendering to zero in on the region of interest

Breast elastography, which offers a way to characterize tissue by differentiating areas of relative stiffness, increasing the information available for diagnostic decisions

Trimester-optimized Spatio-Temporal Image Correlation (STIC), which aids in evaluating fetal heart anatomy and function

Tissue Specific Imaging (TSI) optimizes the system for the specific transducer and exam type, resulting in excellent image quality with little need for time-wasting adjustments

System highlights:

Outstanding clinical performance to support confident diagnoses

Extremely versatile with easy-to-use 3D/4D capability

Designed for optimal workflow and reliability in today's busy practices

Access to ATL award-winning customer service and Remote Services Network

Ultrasound Applications:

[Abdominal](#)

[Cardiac](#)

[Vascular](#)

[Small Parts](#)

[Transcranial](#)

[OB-GYN](#)

[Pediatrics](#)

Compatible Ultrasound Probes and Transducers:

ATL S4-2 sector array probe

ATL L12-5 linear array probe

ATL L9-3 linear array probe

ATL C6-3 curved array probe

ATL C5-2 curved array probe

ATL C8-5 curved array probe

ATL V9-4V endocavity probe



VOLKA MEDICAL TECH CO., LIMITED



+8619536805795



info@volka-medtech.com



3dultrasoundprobe.com

Office 5, 8/F, Mega Cube, 8 Wang Kwong Road, Kowloon Bay, Kowloon, Hong Kong